



PageScope Light for CF2001P

Operator's Manual

Welcome

PageScope Light for CF2001P is a device control utility program provided by the HTTP server built into the CF2001P. With a standard Web browser, this utility can be used as an interface for remote control of the CF2001P.

Trademark Acknowledgements

Minolta is a registered trademark of MINOLTA CO., LTD. PageScope is a trademark of MINOLTA CO., LTD.

Apple and Macintosh are registered trademarks of Apple Computer, Inc.

Ethernet is a registered trademark of Xerox Corporation.

Fiery and the Fiery logo are registered trademarks of Electronics for Imaging, Inc. Fiery WebTools is a trademark of Electronics for Imaging, Inc.

Linux is a registered trademark of Linus Torvalds.

Microsoft, Windows, and Windows NT are registered trademarks of Microsoft Corporation.

Netscape Communications, the Netscape Communications logo, Netscape Navigator, Netscape Communicator, and Netscape are trademarks of Netscape Communications Corporation.

PostScript is a registered trademark of Adobe Systems, Inc.

Solaris is a trademark of Sun Microsystems, Inc.

All other product names are trademarks or registered trademarks of their respective holders.

Copyright 2001 MINOLTA CO., LTD.

The information contained in this manual is subject to change without notice to incorporate improvements made on the product or products the manual covers.

CONTENTS

1	<i>System Requirements</i>	1
2	<i>Access</i>	2
2.1	<i>Operation</i>	2
3	<i>Screen Configuration</i>	3
4	<i>System Tab</i>	5
4.1	<i>Summary</i>	5
4.2	<i>Details</i>	6
4.2.1	<i>Input Tray</i>	6
4.2.2	<i>Output Tray</i>	7
4.2.3	<i>Hard Disk Status</i>	8
4.2.4	<i>ROM Version</i>	9
4.2.5	<i>Interface Information</i>	10
4.2.6	<i>Consumable Status</i>	11
4.3	<i>Preference</i>	12
4.4	<i>Online Assistance</i>	14

5 Printer Tab	16
5.1 Printer Front Panel	16
5.2 Test Print	17
5.3 PostScript Font	18
 Appendix Status List	 19

1 System Requirements

The following items are required to use this utility.

Computer

- Software

Operating System	Web Browser
Windows 95/98/Me/NT 4.0/2000	Internet Explorer 4 or higher Netscape Navigator 4 or higher
Macintosh System 7 or higher	Internet Explorer 4.5 or higher Netscape Navigator 4 or higher
Solaris 2.5.1/2.6/7 (2.7)	Netscape Navigator 4 or higher
Linux	Netscape Navigator 4 or higher

- NIC (Network Interface Card)
- Ethernet or Token Ring
- TCP/IP Protocol

CF2001P

2 Access

PageScope Light for CF2001P can be accessed directly from a Web browser.

1. Start the Web browser.
2. In the URL field, enter the IP address of the printer as shown below.

`http://<IP address of printer>/`

(Example) When the IP address of the printer is 192.9.200.200:

`http://192.9.200.200/`

3. This causes the PageScope Light for CF2001P screen to appear.

2.1 Operation

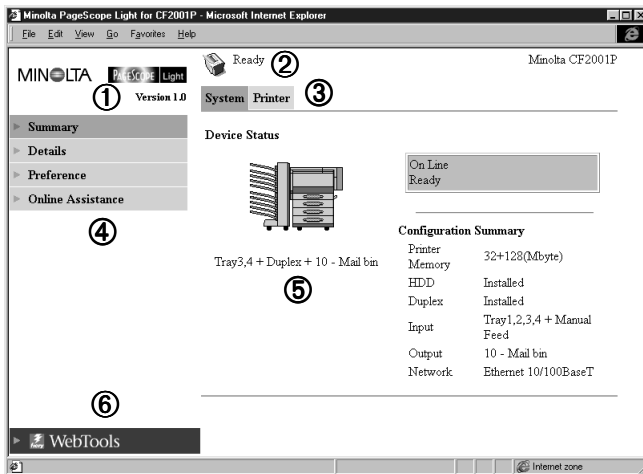
PageScope Light for CF2001P operation is identical to that for Internet Web pages. Clicking a hot link jumps to the link destination, and the **Back** and **Forward** buttons scroll through pages backwards and forward.

3 Screen Configuration

The configuration of the PageScope Light for CF2001P screen is shown below.

Note

- Screen images shown in this manual may differ slightly from actual ones. In addition, specifications are subject to change without prior notice.



① Minolta PageScope Light Logo

Clicking the logo jumps to the Website shown below.

www.minolta.com

② Status Display

The current status of the CF2001P is indicated by both icons and text. The message **Ready** appears when the CF2001P is operating normally. For full details about screen contents, see *Appendix – Status List*.

3 Screen Configuration

③ **Tabs**

Use the tabs to select the category of items you want to display. For full details about tab contents, see *4 – System Tab* and *5 – Printer Tab*.

④ **Menus**

Use the menus to select information or setting items. The menus that appear depend on the currently selected tab. For full details about menu contents, see *4 – System Tab* and *5 – Printer Tab*.

⑤ **Information and Settings Display**

This display shows information or settings in accordance with the selected menu item.

⑥ **Fiery WebTools Logo**

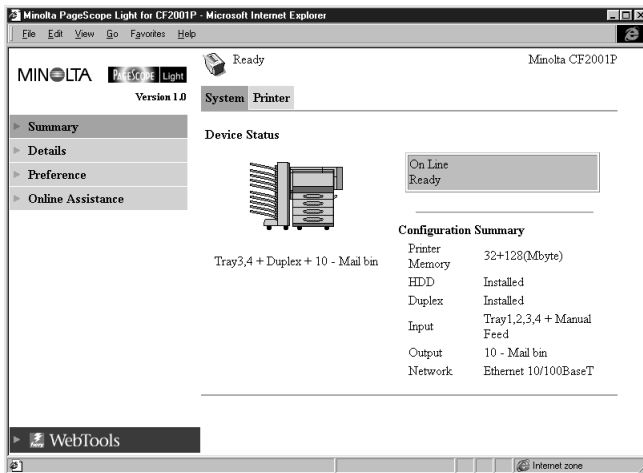
Clicking this logo displays the settings page for Fiery WebTools, which is built in to the printer controller. For details about Fiery WebTools, see the *Fiery Printing Guide*.

4 System Tab

The **System** tab shows information about and settings for the CF2001P system configuration.

4.1 Summary

This screen is the initial screen when you access <http://<IP address of printer>> with your Web browser. You can also display it by clicking the **Summary** menu on the **System** tab. It shows the current CF2001P system configuration.



Device Status This area uses graphics and text to show the configuration of options installed on the CF2001P.

Operational Panel Display

This area shows the printer's message display. Messages are the same as the Status Display messages that appear in the upper part of the window.

Configuration Summary

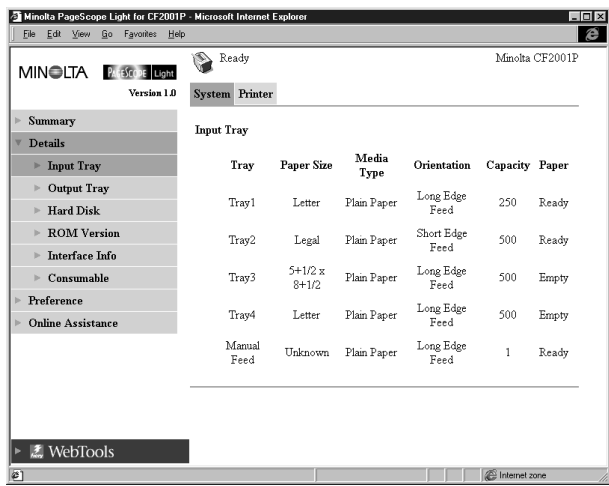
This area shows an overview of the current CF2001P system configuration.

4.2 Details

This screen appears when you click the **Details** menu on the **System** tab. It shows details about each of the CF2001P’s units. Clicking a sub-menu under the **Details** menu displays information about the applicable unit.

4.2.1 Input Tray

This screen appears when you click the **Input Tray** sub-menu under the **Details** menu. It shows the configuration of all the Input Trays installed on the CF2001P.

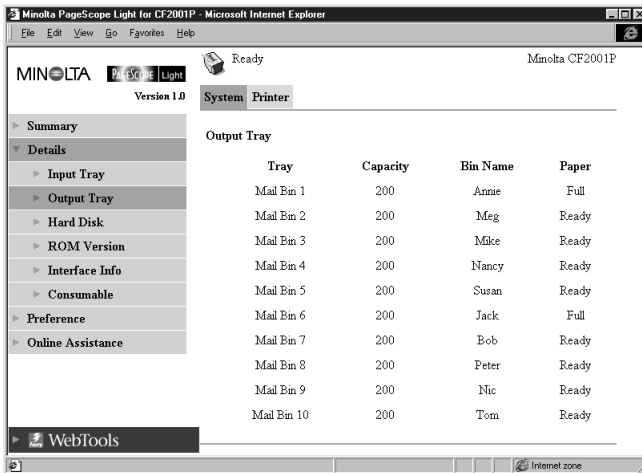


- Tray** Tray name
- Paper Size** Size of paper loaded in the tray
- Media Type** Type of media loaded in the tray
- Orientation** Orientation of paper loaded in the tray

Capacity	Maximum number of sheets that can be loaded in the tray
Paper	Remaining paper status (Shows Ready when paper is present, and Empty when there is no paper left.)

4.2.2 Output Tray

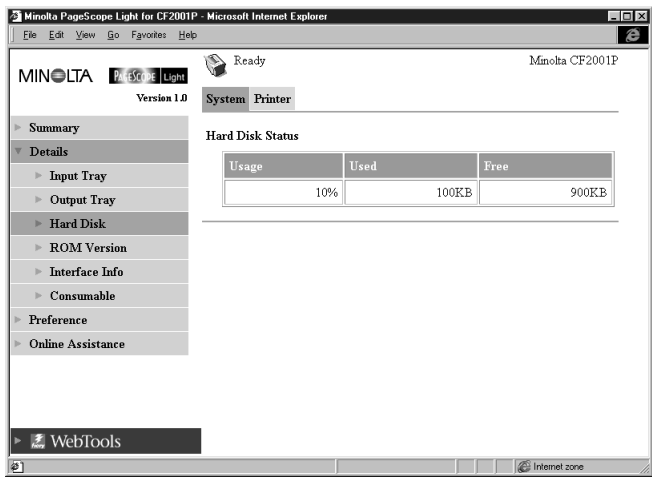
This screen appears when you click the **Output Tray** sub-menu under the **Details** menu. It shows the configuration of all the Output Trays installed on the CF2001P.



Tray	Tray name
Capacity	Maximum number of sheets the tray can hold
Bin Name	When the mail bin sorter is installed, owner name assigned to each bin
Paper	Tray status (Shows Full when the tray is unable to receive any more paper, and Ready when it is.)

4.2.3 Hard Disk Status

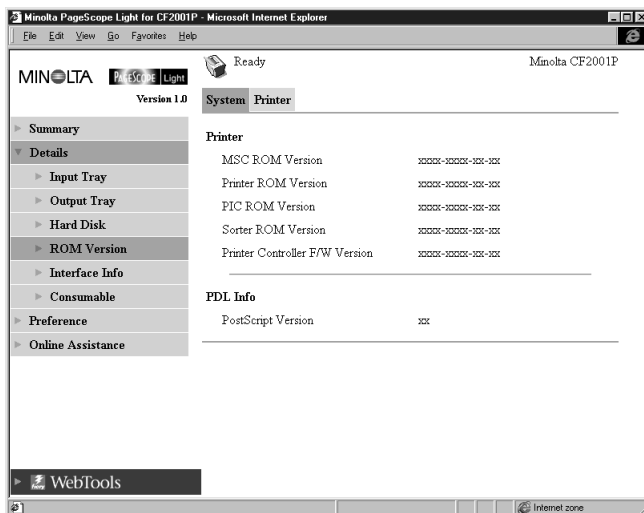
This screen appears when you click the **Hard Disk** sub-menu under the **Details** menu. It shows the status of the hard disk installed on the printer.



Usage	Percent of hard disk space used (%)
Used	Amount of hard disk space used (KB)
Free	Amount of hard disk space free (KB)

4.2.4 ROM Version

This screen appears when you click the **ROM Version** sub-menu under the **Details** menu. It shows information about the on-board memory of the CF2001P.



Printer

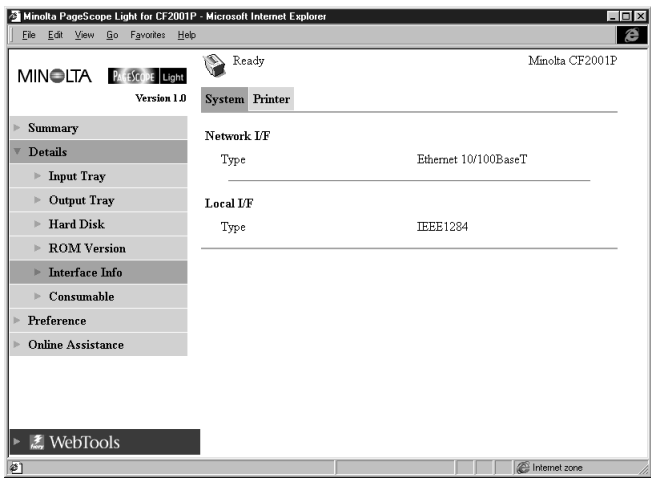
Version of ROM and firmware installed on the CF2001P

PDL Info

Version of printer control code (PostScript) used by the printer controller

4.2.5 Interface Information

This screen appears when you click the **Interface Info** sub-menu under the **Details** menu. It shows information about the printer interface.

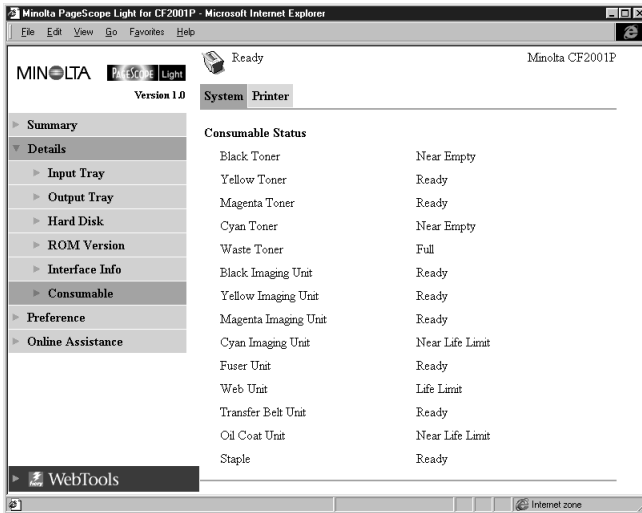


Network I/F Network interface type (Ethernet 10/100BaseT or Token Ring)

Local I/F Local port type

4.2.6 Consumable Status

This screen appears when you click the **Consumable** sub-menu under the **Details** menu. It shows the current status of CF2001P consumables. For information about consumables, see the *CF2001P Operator's Manual*.

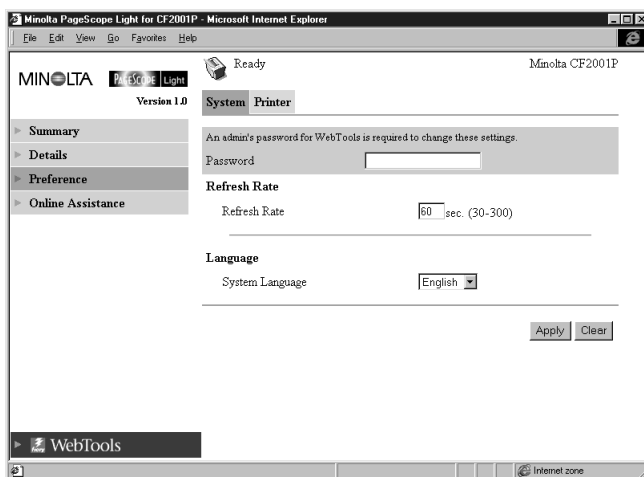


Black Toner	Remaining black toner
Yellow Toner	Remaining yellow toner
Magenta Toner	Remaining magenta toner
Cyan Toner	Remaining cyan toner
Waste Toner	Remaining waste toner bottle capacity
Black Imaging Unit	Black Imaging Unit service life status
Yellow Imaging Unit	Yellow Imaging Unit service life status
Magenta Imaging Unit	Magenta Imaging Unit service life status
Cyan Imaging Unit	Cyan Imaging Unit service life status
Fuser Unit	Fuser Unit service life status

Web Unit	Web Unit service life status
Transfer Belt Unit	Transfer Belt Unit service life status
Oil Coat Roller Unit	Oil Coat Roller Unit service life status
Staple	Remaining staples

4.3 Preference

This screen appears when you click the **Preference** menu on the **System** tab. It lets you make changes to the PageScope Light environment.



Password Type in the password here when a password is defined. Note that the password is case-sensitive, so be sure to type in upper-case and lower-case characters correctly. (The password you should type in here is the same as the administrator password you created for Fiery WebTools.)

Refresh Rate Type in a value to specify the number of seconds between screen refreshes. You can input a value from 30 to 300 seconds. The default setting is 60 seconds.

- Language** Select the screen language you want to use for PageScope Light.
- English
 - German
 - French
 - Italian
 - Spanish
- Apply Button** Click this button to apply any settings you have input or selected up to this point.
- Clear Button** Click this button to cancel any settings you have input or selected up to this point.

Note

- The message **Invalid Password** appears on the screen if you input the wrong password. If this happens, click your Web browser's **Back** button to return to the previous page and configure your preferences again.

4.4 Online Assistance

This screen appears when you click the **Online Assistance** menu on the **System** tab. It shows information and lets you make settings related to product support.

Minolta PageScope Light for CF2001P - Microsoft Internet Explorer

File Edit View Go Favorites Help

Ready Minolta CF2001P

MINOLTA PageScope Light Version 1.0

System Printer

Summary
Details
Preference
Online Assistance

An admin's password for WebTools is required to change these settings.

Password

Contact

Contact Tel Number

Product Help URL

Minolta Corporate URL

Tel Number for Supplies and Accessories

Apply Clear

WebTools

Internet zone

Password Type in the password here when a password is defined. Note that the password is case-sensitive, so be sure to type in upper-case and lower-case characters correctly. (The password you should type in here is the same as the administrator password you created with Fiery WebTools.)

Contact Type in the name of your product support counter.

Contact Tel Number Type in the phone number of your product support counter.

Product Help URL Type in the URL of your product information Website. Clicking the **Product Help URL** jumps to the Website you specify here.

Minolta Corporate URL

Type in the URL to the Minolta home page.
Clicking the **Minolta Corporate URL** jumps to the Website you specify here.

Tel Number for Supplies and Accessories

Type in the telephone number of the support counter you need to contact to order consumables and accessories.

Apply Button Click this button to apply any settings you have input up to this point.

Clear Button Click this button to cancel any settings you have input up to this point.

Note

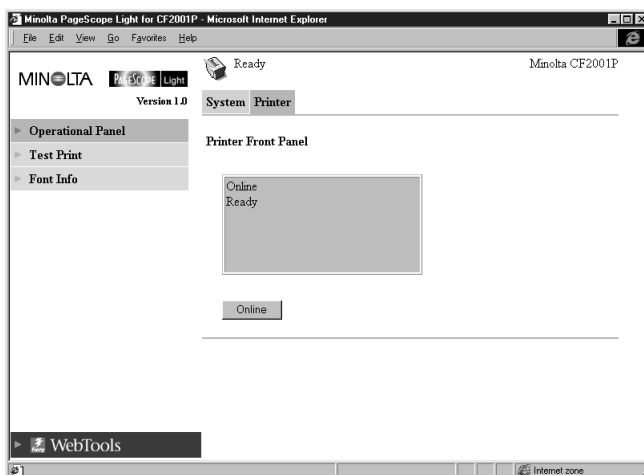
- The message **Invalid Password** appears on the screen if you input the wrong password. If this happens, click your Web browser's **Back** button to return to the previous page and configure your online assistance settings again.

5 Printer Tab

The **Printer** tab shows information and settings for printing on the CF2001P.

5.1 Printer Front Panel

This screen appears when you click the **Operational Panel** menu on the **Printer** tab. It provides on-screen emulation of the printer's operational panel.

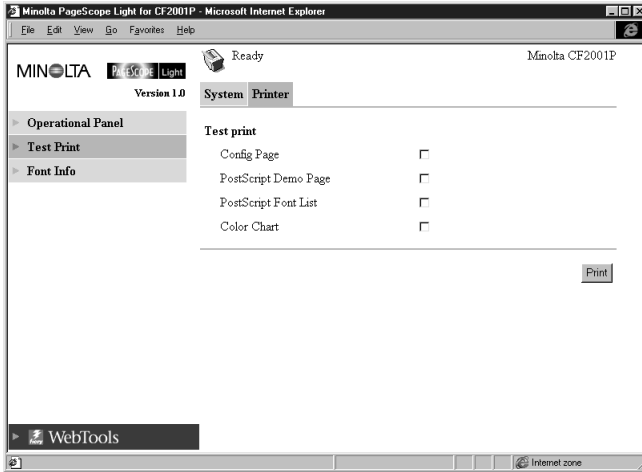


Display This area shows the printer's message display. Messages are the same as those that appear on the printer control panel LCD.

Online Button Toggles the printer network connection on line and off line

5.2 Test Print

This screen appears when you click the **Test Print** menu on the **Printer** tab. It lets you select a test print page and execute a test print operation.



Config Page Insert a check mark into the box to print the printer setup page.

PostScript Demo Page Insert a check mark into the box to print the PostScript demo page.

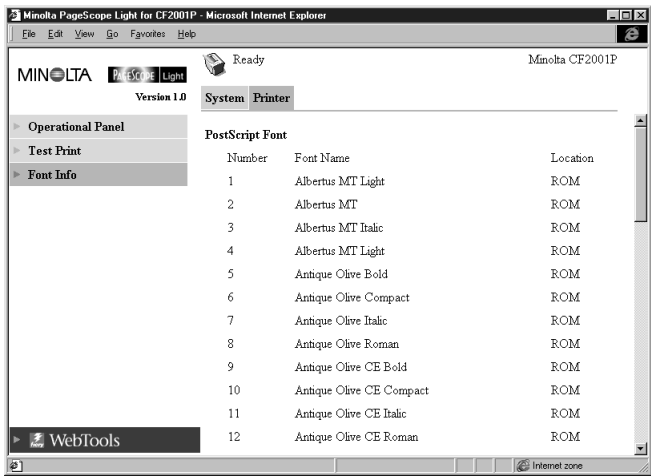
PostScript Font List Insert a check mark into the box to print the PostScript font list.

Color Chart Insert a check mark into the box to print the color chart.

Print Button Click this button to execute a test print operation.

5.3 PostScript Font



This screen appears when you click the **Font Info** menu on the **Printer** tab. It shows a list of PostScript fonts built into the printer. The names of fonts downloaded to the printer from the computer are added to the bottom of the list.





- Font Name**
- Font name
- Location**
- Storage location of the font (ROM, RAM, HDD)

Appendix Status List

The current CF2001P status is indicated by an icon in the upper part of the window. More detailed messages appear in the text area next to the icon. The contents of the list are arranged in order of importance (most critical first).

Icon	Status	Message	Description
	Fatal	Engine Malfunction	
	Error	Check Power and Cable	
		Cover Open	
		Set Up Error	Option or other component is not installed correctly.
		Parts Missing	Consumable is not installed correctly.
		Paper Jam	
		Paper Empty	Paper tray is empty.
		Paper Size Mismatch Error	Specified paper size is different from size of paper in paper tray.
		Paper Media Mismatch Error	Specified paper type is different from paper type being fed.
		Life of Parts	Consumable is depleted.
		Paper Capacity Over	Capacity of output tray was exceeded.

Appendix Status List

Icon	Status	Message	Description
	Attention	Off Line	Connection to printer network is offline.
		Image Lost	Image data was lost.
		Capacity Over	Waste toner bottle is full.
		Option Parts Malfunction	
		Paper Empty	Paper tray is empty.
		Paper Near Empty	Tray is about to run out of paper.
		Life of Parts	Consumable is depleted.
		Near Life of Parts	Consumable is nearing depletion.
		Warning	Some problem occurred when acquiring the machine status.
	Ready	Printing	
		Warming Up	
		Power Save	Printer is in power save mode.
		Sleep Mode	
		Ready	Printer is ready.



Copyright
2001 MINOLTA CO., LTD.

The information contained in this manual is
subject to change without notice to
incorporate improvements made on the
product or products the manual covers.

MINOLTA CO., LTD.
3-13, 2-chome, Azuchi-machi, Chuo-ku, Osaka. 541-8556, Japan